

26

SECEC-ESSSE | EUROPEAN SOCIETY FOR SURGERY
CONGRESS OF THE SHOULDER AND THE ELBOW



MILANO 2015
ITALY
September 16-19



How to decrease scapula notching ?

Retrospective multicenter study on 90 reversed prosthesis
with analyse of gleno metaphyseal angle

L Obert, E Jardin, F Loisel,
A Adam, J Uhring, D Gallinet,
S Rochet, T Lascar

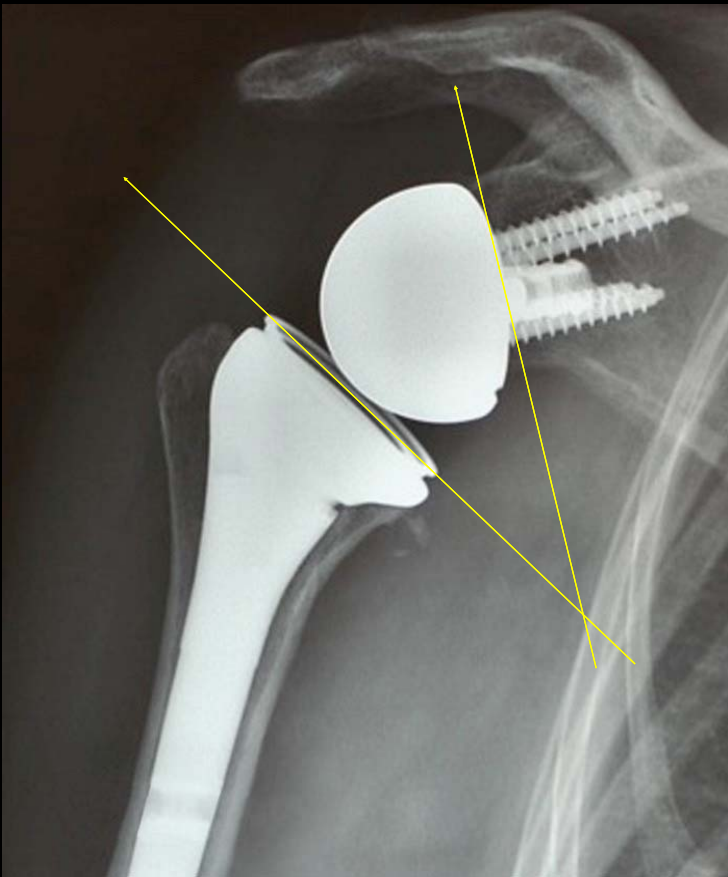


BESANÇON
SITE PITTORESQUE, CENTRE DE TOURISM
STATION SALINE MUSÉES HORLOGERI



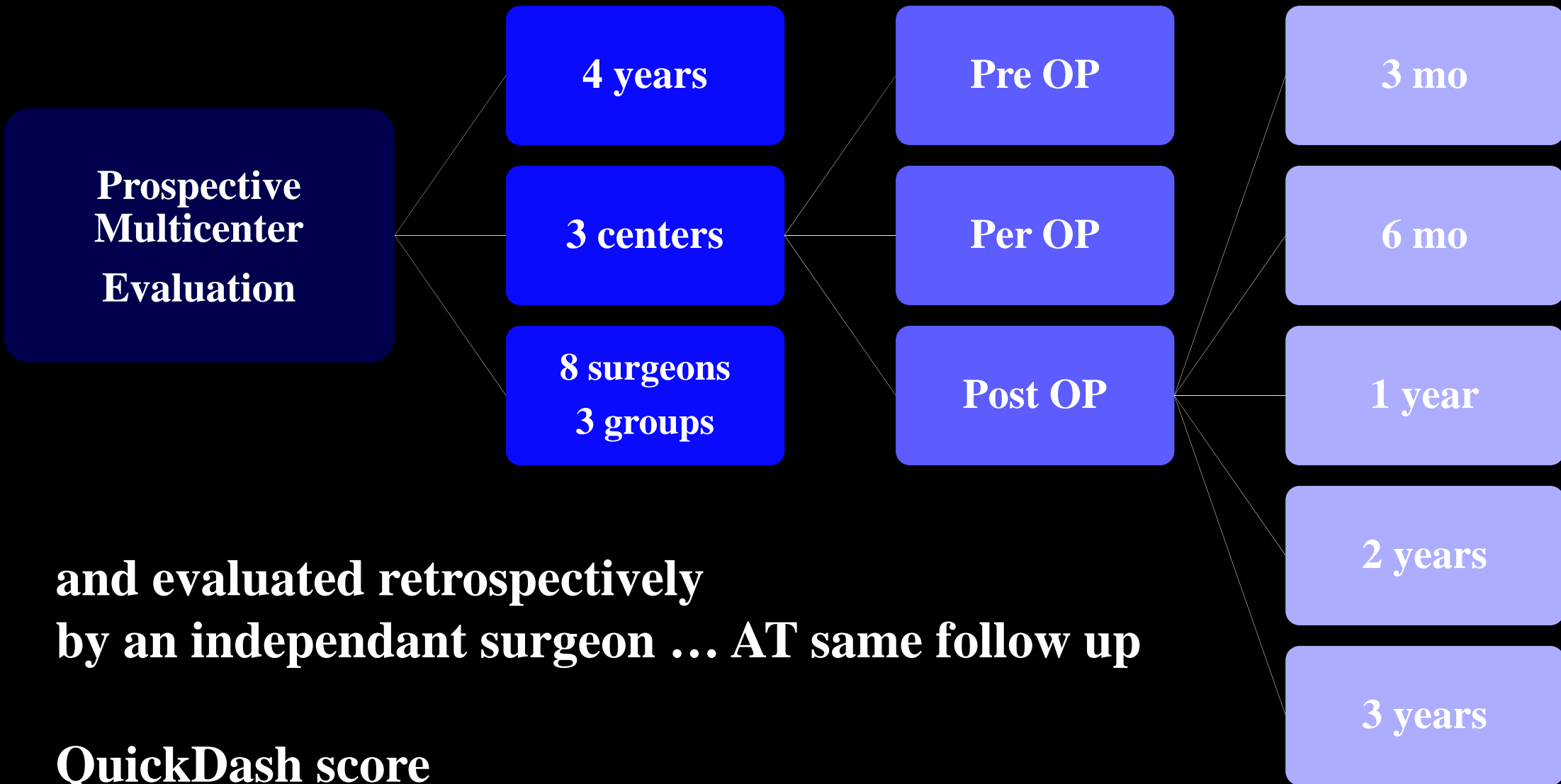
Introduction

The aim of the retrospective multicenter study was to correlate the functional results with ...
the **gleno metaphyseal angle**



Material & Methods

N= 90 patients



and evaluated retrospectively
by an independant surgeon ... AT same follow up

QuickDash score

Constant score

clinical and radiological complications / **glenometaphyseal angle**

Material & Methods

3 prosthesis

1st generation of reversed prosthesis (4 surgeons)

humeral neck angle of 155°, Aequalis-Reversed Tornier®



BioRSA (2 surgeons)

**humeral neck angle of 155°,
lateralization of center of rotation**



Last generation of reversed prosthesis (3 surgeons)

more vertical angle of 145°,

Humelock-Reversed, FX-Solutions®



Results : N=90

The GAIN between pre & post op :

Abduction : 58,6° (-10°/140°)

Flexion (AEA) : 62,6°(-15°/130°)

Constant Brut : 36,5 points (7- 53,5)

Constant with ponderation : 53,2 % (9,8-83,1)

QuickDash : 45,3 points (0-88,6)

Mobility and fonctionnal scores :

No differences depending on the type of implant

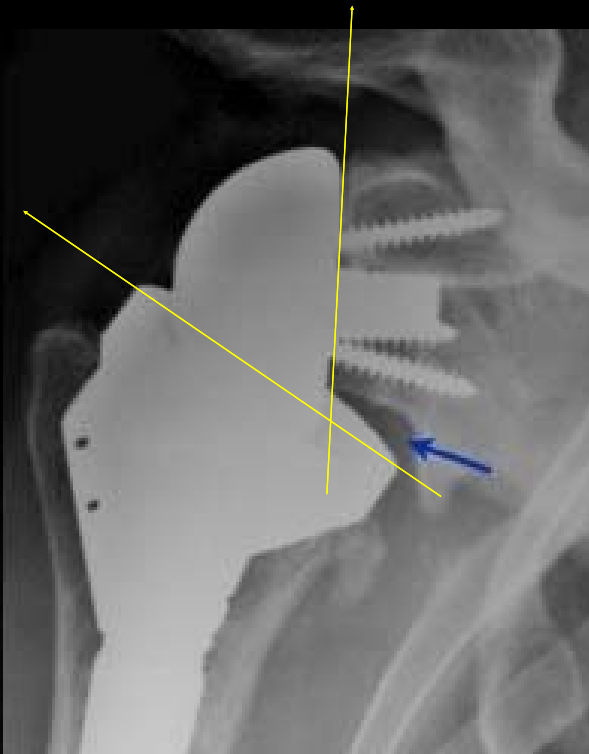
significantly better in the group implanted after 2012
than before 2010

Results

Gleno metaphyseal angle : $37,5^{\circ}$

The quantity of notch were significantly lower when

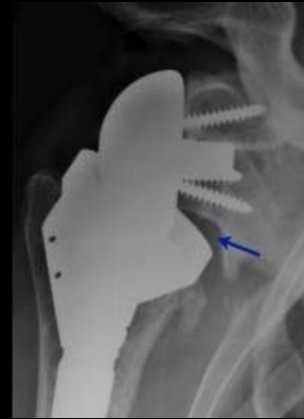
The angle was **between 35° and 45°**



Results

Notch : 35%

No notch in FX group ... 57% in the 2 other groups



Most frequent with superior approach

Bio RSA : 46% partial or total lysis

Conclusion

You can reach the right gleno metaphyseal angle (**35-45°**)...

In playing on the **glenoid part** (tilt, low implantation of metaglene)

Or in the **humeral part** (verticalisation of humeral angle : 145°)

Or both ... FX solution ...

